



The continuous integration solution for your development projects

Beebox allows the standardization and automation of the different steps of your development process, such as: configuration, build, deployment, testing and much more! Therefore, **Beebox** is the perfect tool to manage the different systems that make up your IT infrastructure, regardless of its size.

Survol de Beebox :



Configure :

Set up a unique automated process that uses your various systems to perform tasks such as fetching sources from CVS, building your project, deploying to a server, and the execution of quality assurance tests.



Manage :

Keep all your system configuration versions in one place. Complex operations for server configuration in development phase only require a few simple clicks.



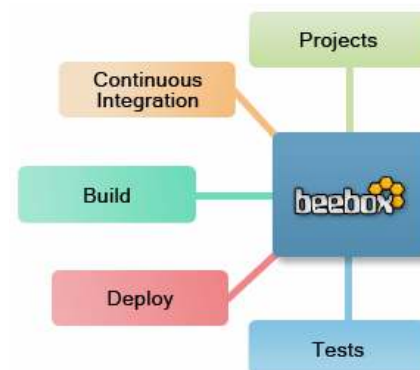
Automate :

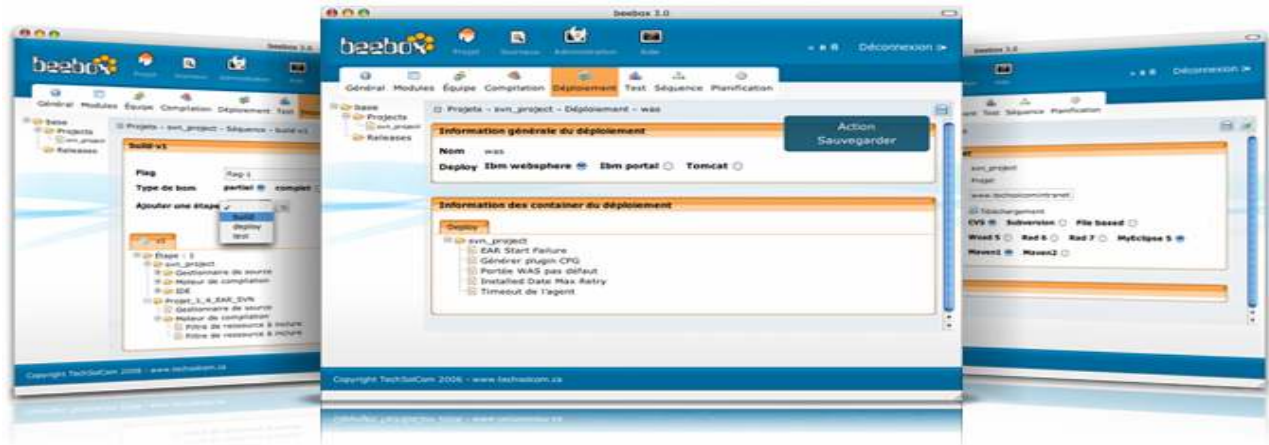
Create and save a series of actions to achieve delegation that is easy to manage and where the risk of error is minimal.

Why use beebox?

In order to manage projects efficiently, whether they are in Java/J2EE or other languages, managers and developers need a tool that provides centralised configuration management and that is able to adapt itself to meet the needs of various environments.

Beebox simplifies both the development life cycle and performing operations on different environments.





Beebox Works :

Beebox is a complete solution that has been used for quite some time in many companies. Here are a few testimonials from our clients:



TechSolCom IT Group was a new supplier for us, and beebox was one of their first initiatives at Telefilm. We viewed beebox as a very low risk initiative with good potential benefits. We were pleasantly surprised to see the impact it had, which was actually way bigger than what we had anticipated. TechSolCom's professionalism approach and the fact that beebox brought tremendous value to our enterprise motivated us.

- Patrick Wu, JEE Architect



Currently beebox is used in 15 initiatives (applications) in 4 different environments. The 20 IT staff use the centralized environment provided by beebox to quickly modify, test and deploy applications and subsets of applications. In addition, beebox helped us to have a much better time to market in terms of quality of application, code deployed in production and being able to reproduce any environment in any time with one click.

- André Larouche, Cheif of IT department



beebox allowed us to manage product life cycle of different system components throughout our several environments, easily and efficiently.

- Pierre Lessard, JEE Architect